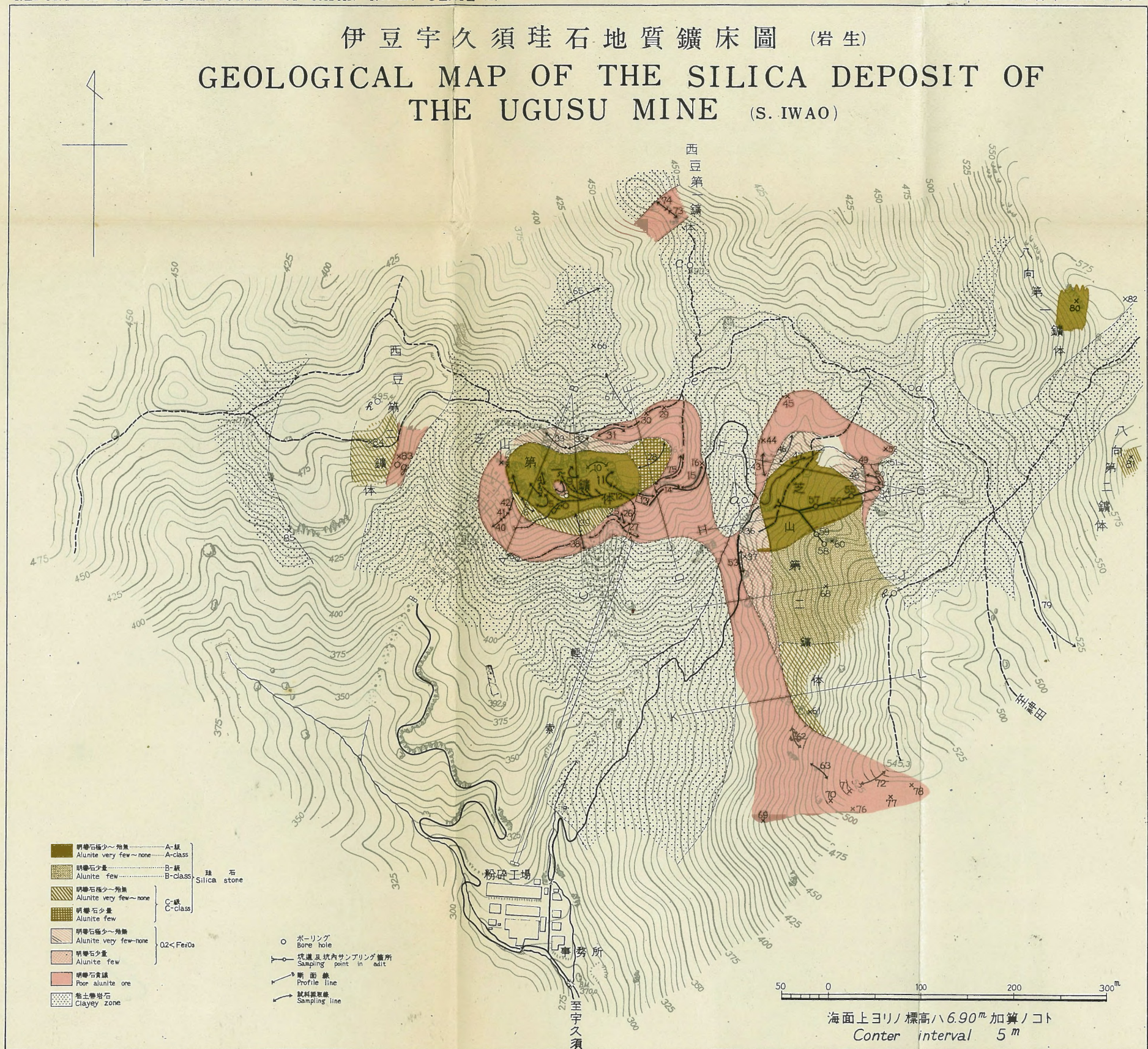
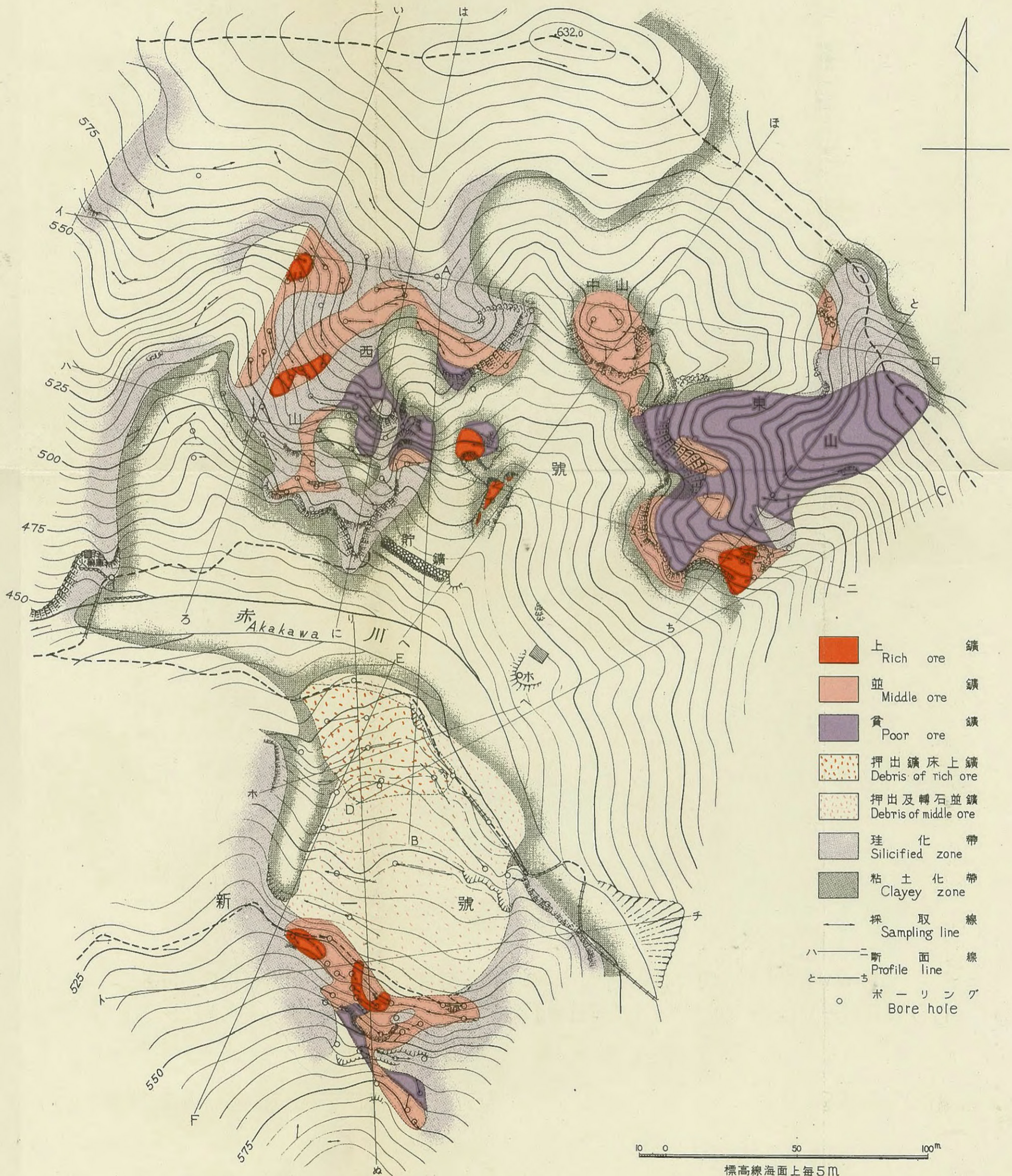


伊豆宇久須珪石地質鑛床圖 (岩生)  
 GEOLOGICAL MAP OF THE SILICA DEPOSIT OF  
 THE UGUSU MINE (S. IWAO)

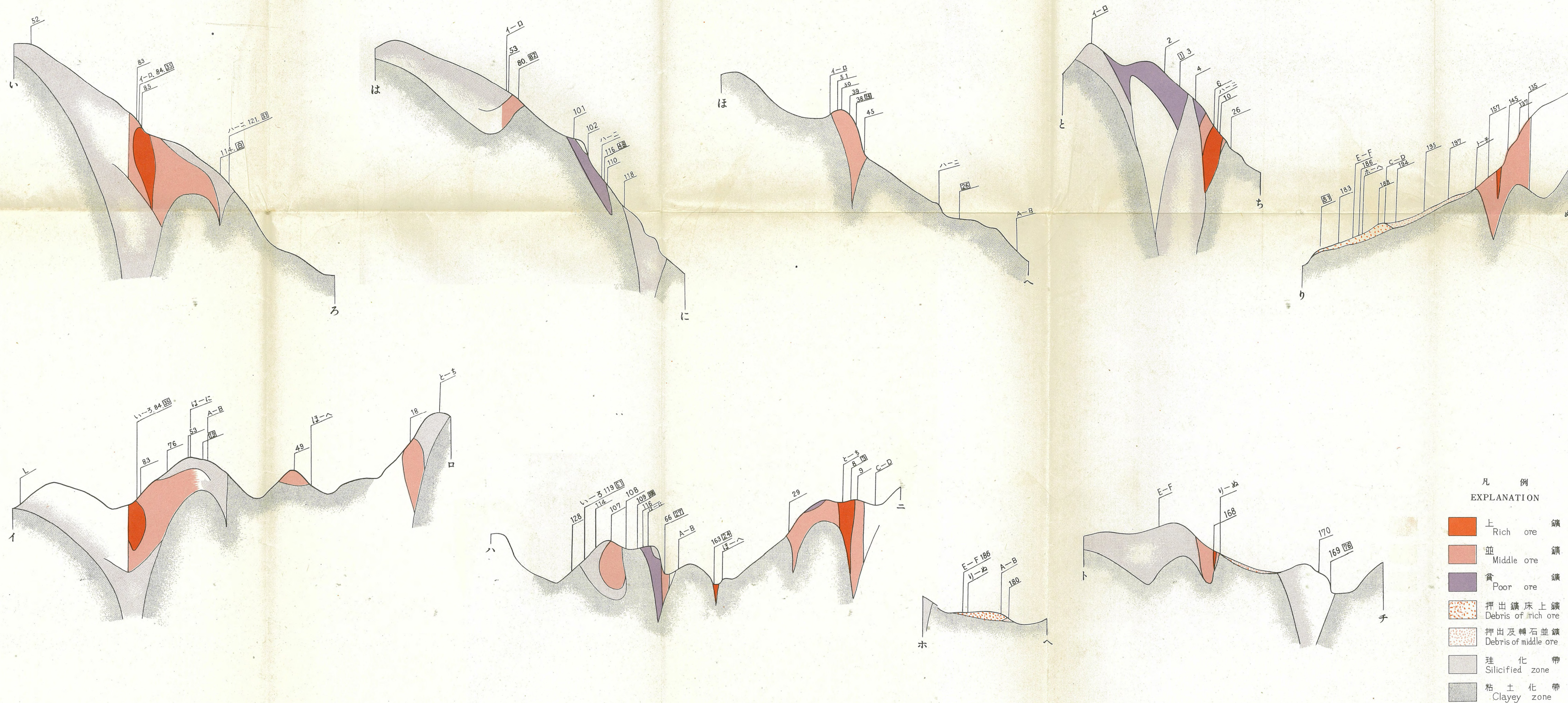


伊豆仁科鑛山一號新一號地形及鑛床圖 (片山)

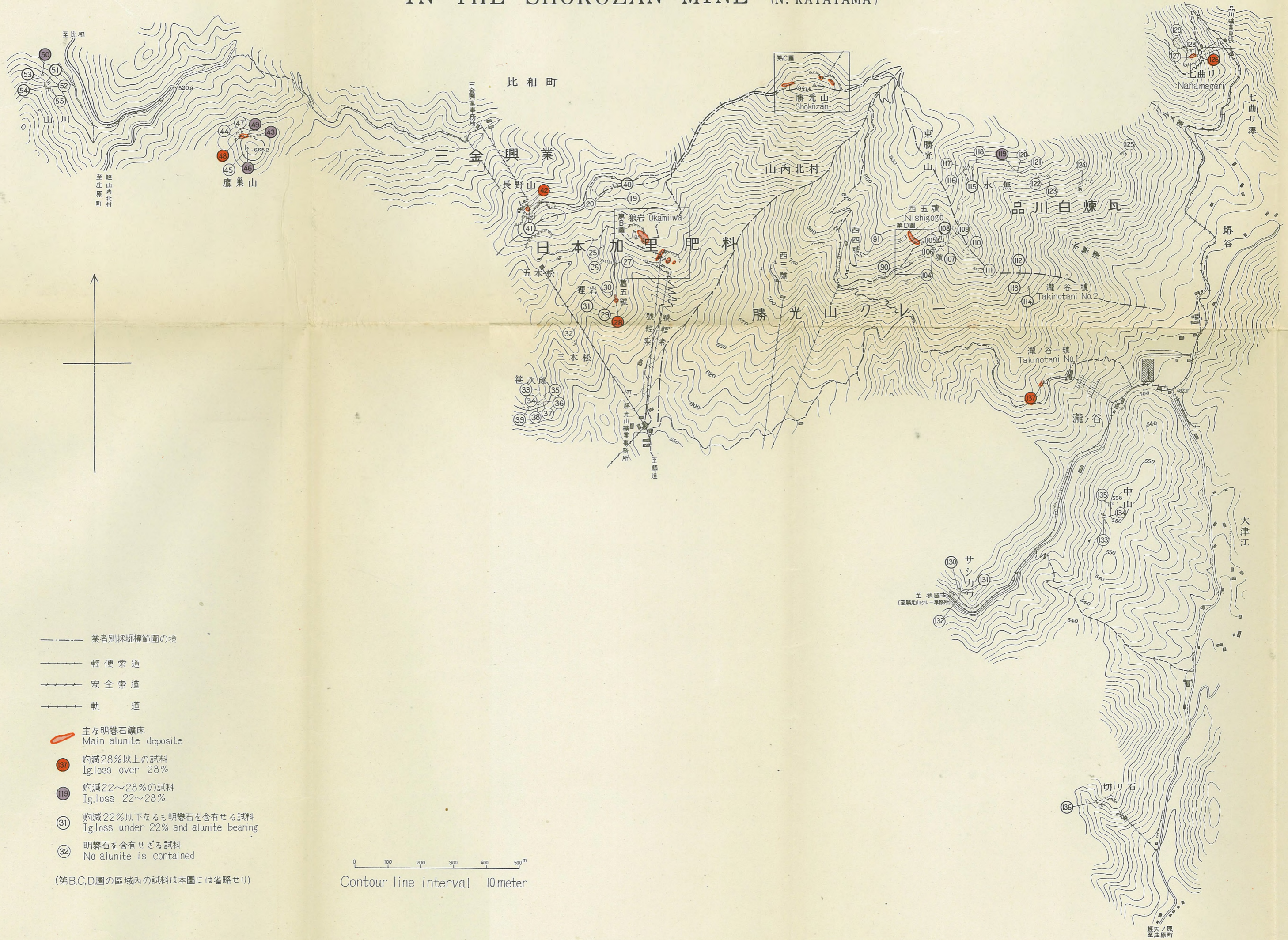
GEOLOGICAL MAP OF THE ICHIGŌ AND SHIN-ICHIGŌ ORE BODIES IN THE NISHINA MINE (N. KATAYAMA)



伊豆仁科鑛山推定斷面圖  
ASSUMED PROFILES OF THE NISHINA MINE



勝光山頂上附近鑛床圖 (片山)  
 LOCALITY AND SAMPLING MAP OF THE DEPOSITS  
 IN THE SHŌKŌZAN MINE (N. KATAYAMA)

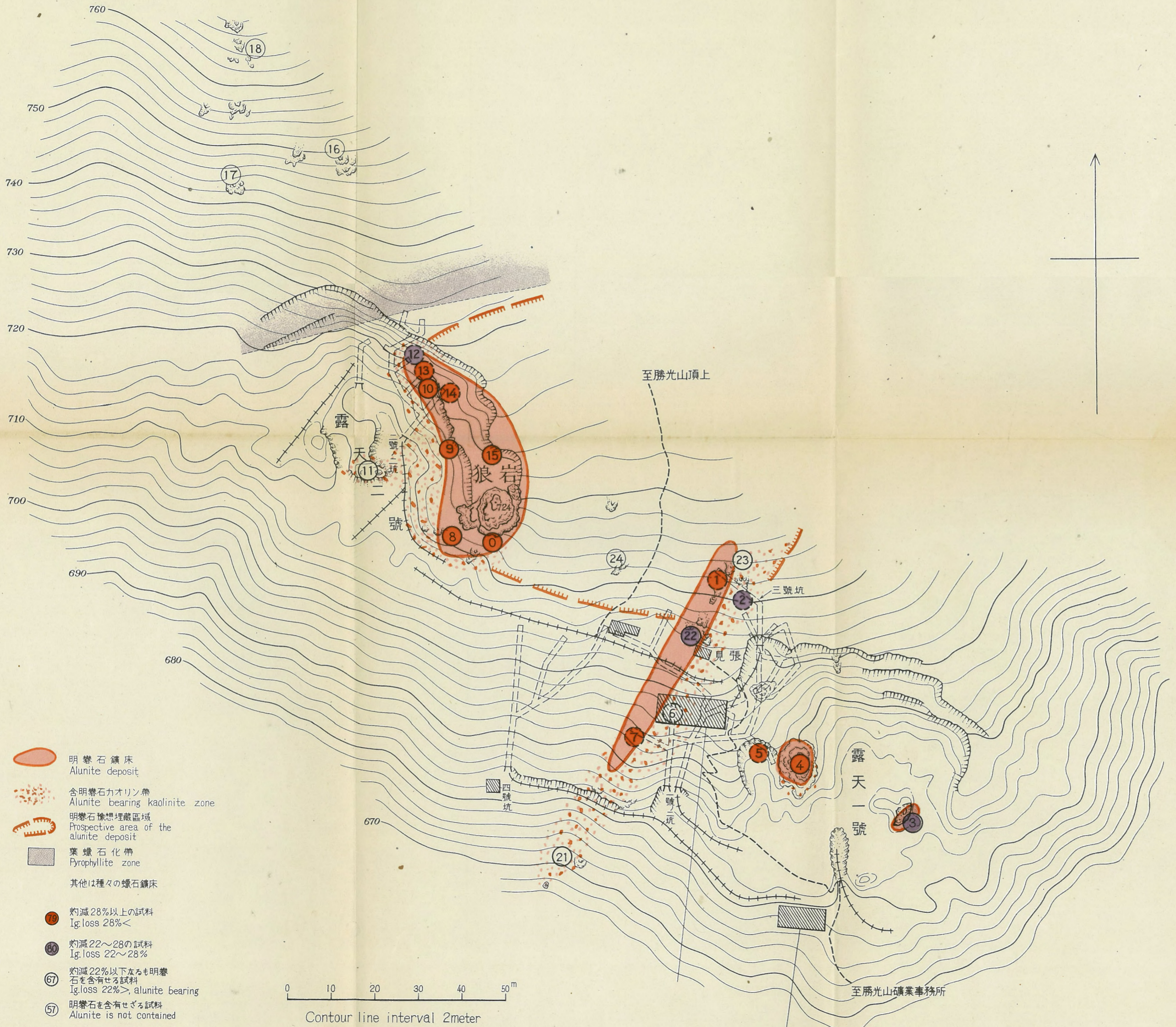


- 業者別採掘権範囲の境
  - 軽便索道
  - 安全索道
  - 軌道
  - 主な明礬石鑛床  
Main alunite deposit
  - 灼減28%以上の試料  
Ig.loss over 28%
  - 灼減22~28%の試料  
Ig.loss 22~28%
  - 灼減22%以下ながらも明礬石を含有せる試料  
Ig.loss under 22% and alunite bearing
  - 明礬石を含有せざる試料  
No alunite is contained
- (第B,C,D圖の区域内の試料は本圖には省略せり)

0 100 200 300 400 500m  
 Contour line interval 10meter


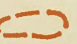




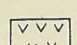
狼岩附近鑛床圖 (片山)

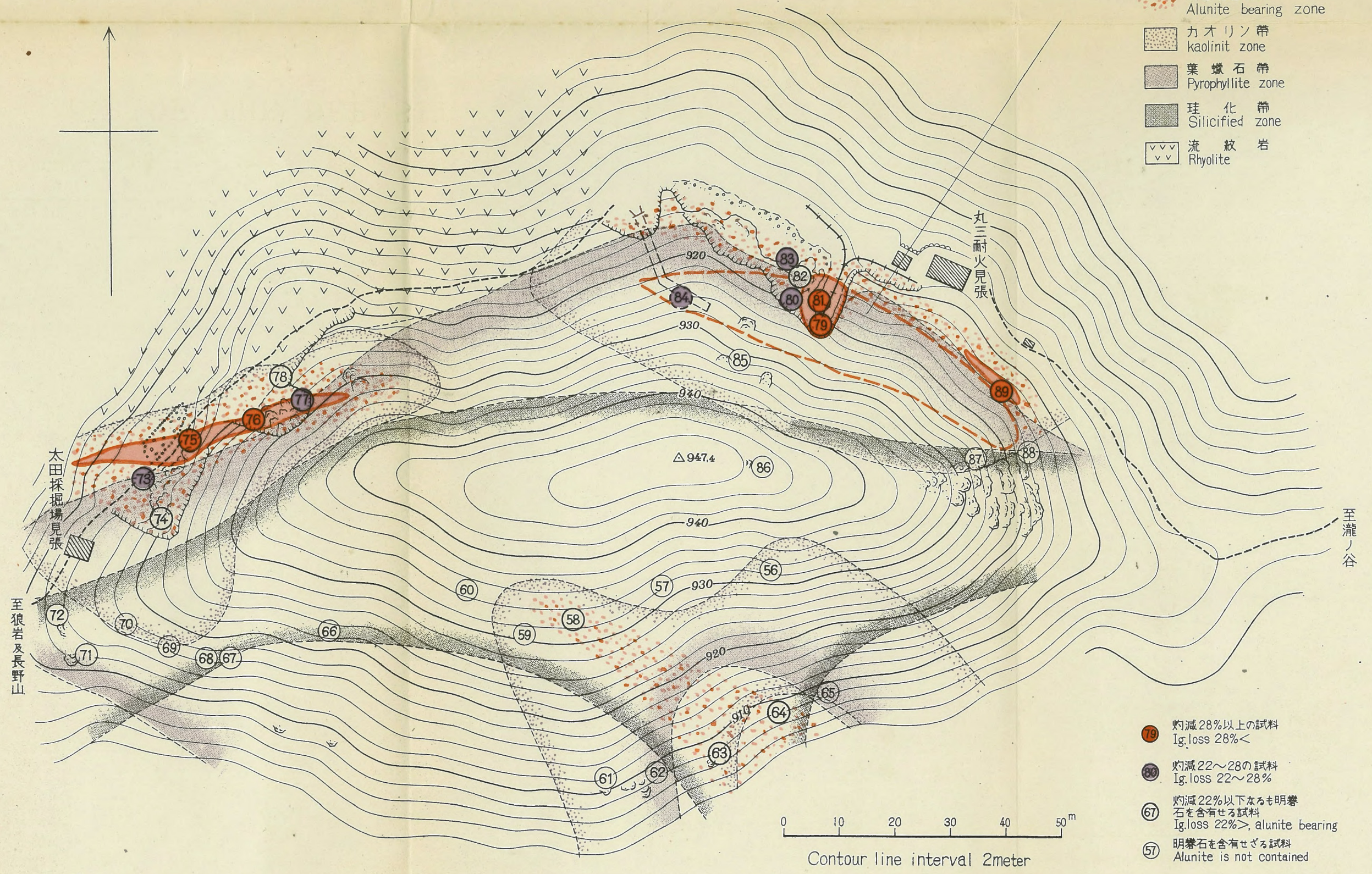
MAP OF THE ŌKAMIWA DEPOSITS (N. KATAYAMA)



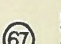



勝光山頂上附近鑛床圖 (片山)

MAP OF THE DEPOSIT NEAR THE MT. SHŌKŌZAN (N. KATAYAMA)

-  明礬石鑛床  
Alunite deposit
-  全908"地並に於ける推定鑛体  
Prospective area of the alunite deposit
-  明礬石含有帯  
Alunite bearing zone
-  カオリン帯  
kaolinit zone
-  葉蠟石帯  
Pyrophyllite zone
-  珪化帯  
Silicified zone
-  流紋岩  
Rhyolite

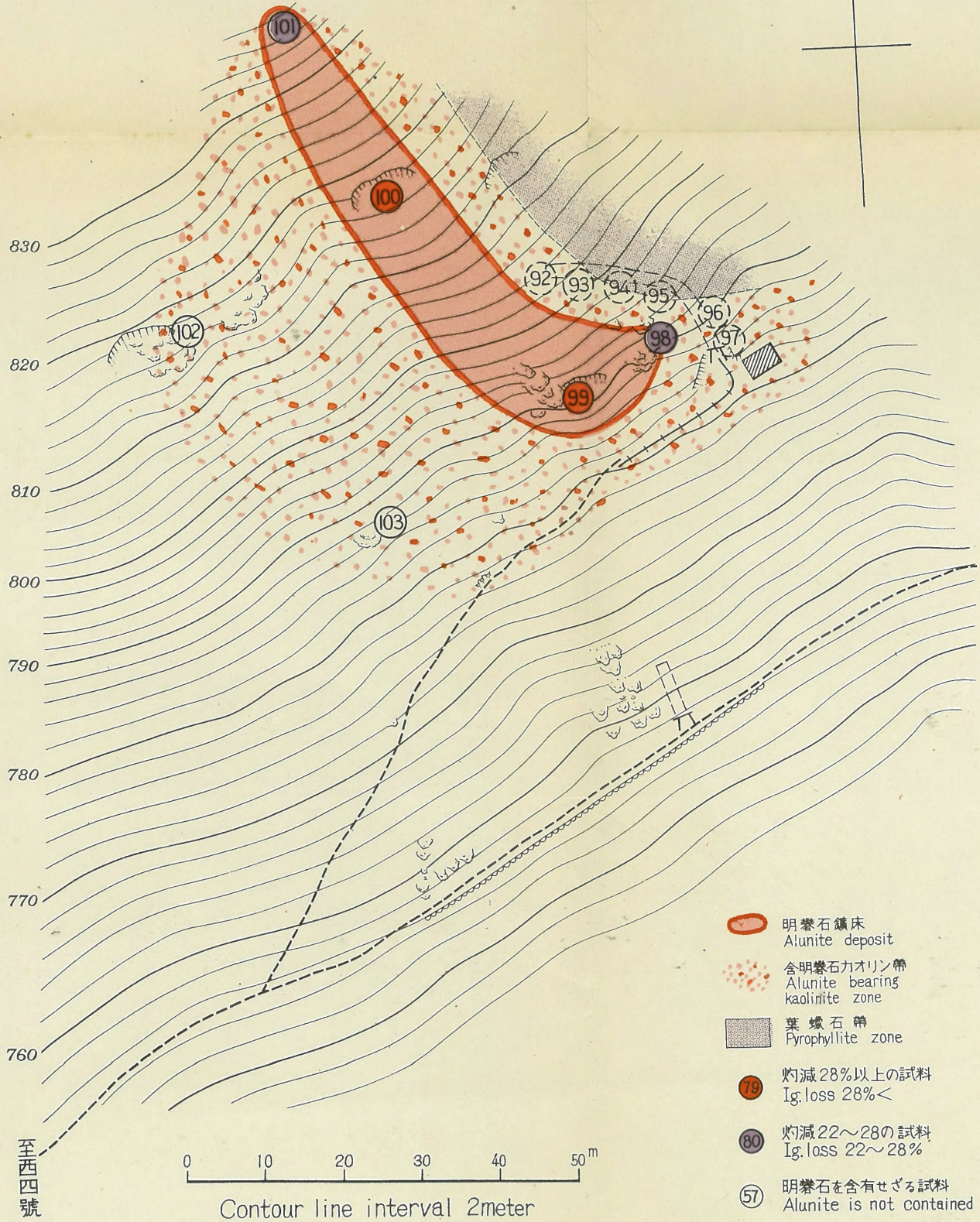


-  灼減28%以上の試料  
Ig. loss 28% <
-  灼減22~28%の試料  
Ig. loss 22~28%
-  灼減22%以下なるも明礬石を含有せる試料  
Ig. loss 22% >, alunite bearing
-  明礬石を含有せざる試料  
Alunite is not contained

0 10 20 30 40 50<sup>m</sup>  
Contour line interval 2meter

西五號鑛床圖 (片山)

MAP OF THE NISHI-GOGŌ DEPOSIT  
(N. KATAYAMA)



栃原明礬石鑛床坑內圖 (片山)

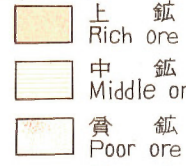
DETAILED MAP OF THE ALUNITE DEPOSIT  
OF THE TOCHIBARA MINE (N. KATAYAMA)



四号坑  
地並  
4th level



露頭坑  
地並  
Exposure



上 礬  
Rich ore  
中 礬  
Middle ore  
貧 礬  
Poor ore  
礬化帶  
Mineralized area  
目  
Fissures

明礬石  
礬床  
Alunite deposit

⑬ 22%以上  
(22% or more)  
⑰ 18-22%  
⑳ 14-18%  
㉑ 14%以下  
(14% or less)

明礬石  
分析試料  
番号  
Sampling number

