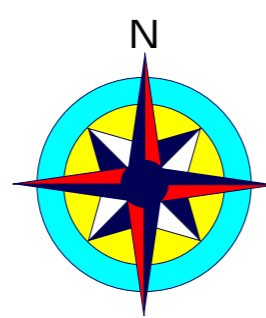
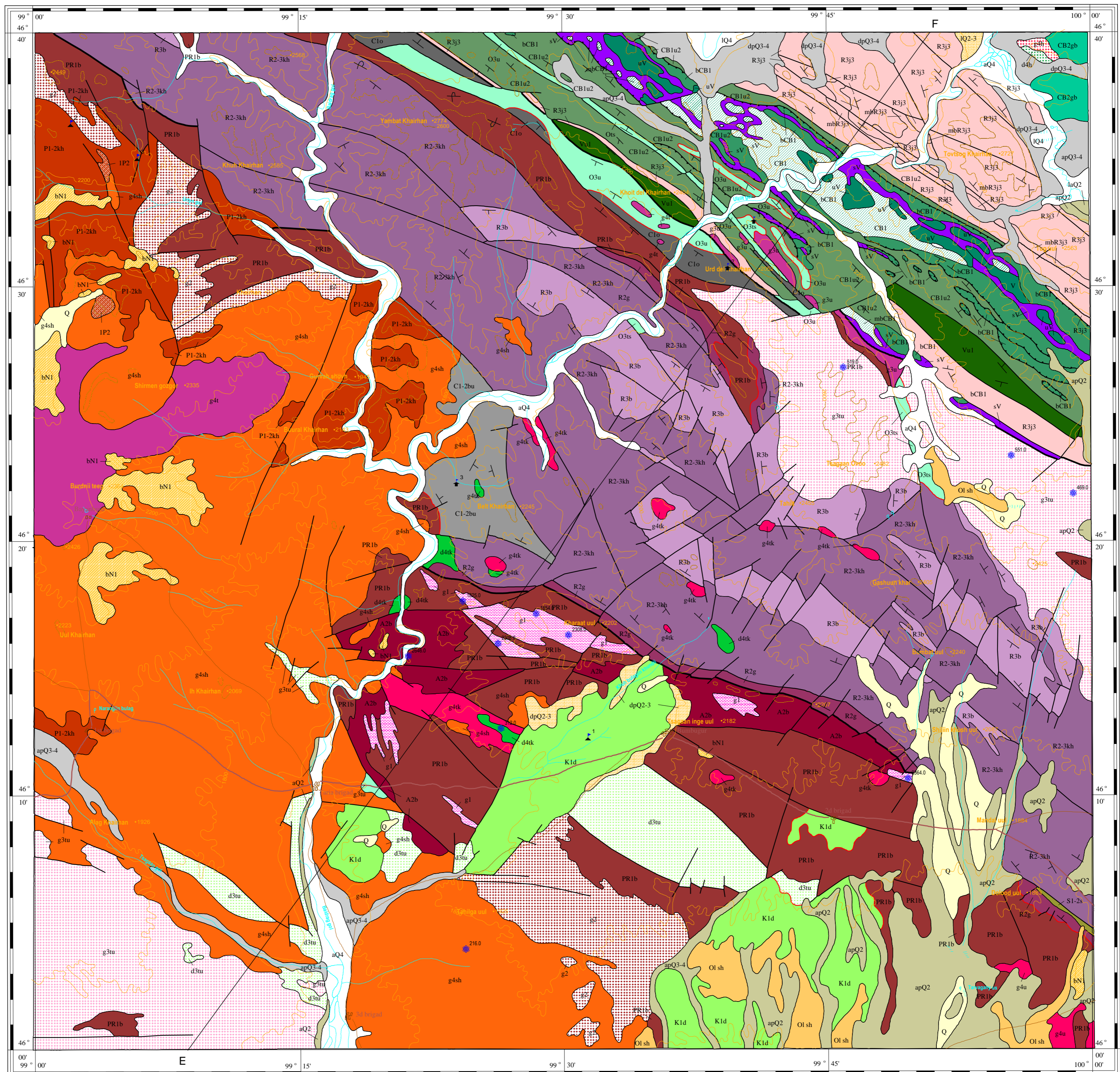


GEOLOGICAL MAP

L-47-XVI

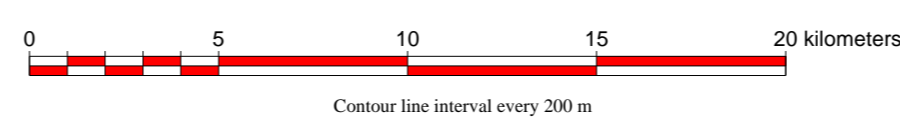
MONGOLIA
Mineral Resources Authority of Mongolia
Office of Geology
Bureau of Geological Investigation C 1998

JAPAN
Japan International Cooperation Agency
Geological Survey of Japan

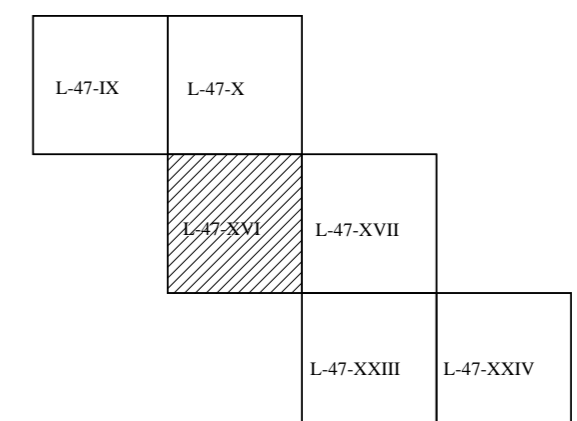


1:200 000

1 cm equivalent to 2 km



Contour line interval every 200 m



LEGEND

- Q4: a-alluvium, l-lacustrine
- Q3-4: ap-alluvium-proluvium, dp-deluvium-proluvium
- Q2-3: dp-deluvium-proluvium
- Q2: ap-alluvium-proluvium, la-lacustrine-alluvium
- Q: Undivided
- bN1: Flood Basalt
- O1 sh: Shand-gol Formation
- K1d: Dovont Formation
- g4h: Khangai Complex (granites)
- d4h: Khangai Complex (diorites)
- g4u: Ulaagchin Complex (granites)
- g4sh: Shar-us-gol Granite (granites)
- g4t: Tarvagatai Complex (granites)
- g4k: Tsogt-khairhan Complex (granites)
- g4k: Tsogt-khairhan Complex (diorites)
- IP2: Subvolcanics
- P1-2kh: Khureemeral Formation
- C1-2bu: Buutsagaan Formation
- C1o: Orhi-khundi Formation
- S1-2s: Saran-utul Formation

- O3ts: Tsagaandel Formation
- O3u: Ulaansair Formation
- g3u: Ugalz Granite (granites)
- g3tu: Tsahir-utul Complex (granites)
- d3tu: Tsahir-utul Complex (diorites)
- CB2gb: Zag Group: Gurvanbulag Formation
- bCB1: Bayanhongor Ophiolite Complex (basaltic pillow lavas)
- mbCB1: Bayanhongor Ophiolite Complex (sheeted dykes)
- vV: Bayanhongor Ophiolite Complex (gabbro)
- sV: Bayanhongor Ophiolite Complex (metamorphosed ultrabasic rocks)
- CB1u2: Jirem-nuruu Group: Ulzit-gol Formation (Upper M.)
- Vu1: Jirem-nuruu Group: Ulzit-gol Formation (Lower M.)
- R3j3: Jirem-nuruu Group: Jargalant-nuruu Formation (Upper M.)
- g2: Riphean Complex (granites)
- R3b: Burd-gol Group: Bumbat Formation
- R2-3kh: Burd-gol Group: Khuhbulag Formation
- R2g: Burd-gol Group: Gunhudag Formation
- g1: Proterozoic Granite (granites)
- PR1b: Bombogor Metamorphic Complex
- AR2b: Baidrag Metamorphic Complex

- Unconformity
- Main normal fault
- Major normal fault
- Thrust fault (allochthon below)
- Thrust fault (allochthon above)
- Locality of radiometric age (Ma)
- Locality of microfossils (reference No.)
- Locality of fossil fauna (reference No.)
- Locality of fossil flora (reference No.)

Published by:
Geoinformation Section of Bureau of Geological Investigation

Edited by:
O. Tomurtogoo, T. Nakajima, Y. Takahashi, Ch. Minjin,
N. Ichimorov, and S. Oyungere

Geological Survey and Map Compilation by:
O. Tomurtogoo, Y. Takahashi, T. Nakajima, N. Ichimorov,
S. Oyungere, Ch. Minjin, Lh. Bayarmandal, Y. Teraoka,
Ch. Kurimoto, F. Tungalag, B. Delgersotog, and K. Naito

Computer Processing by:
Y. Watanabe, G. Djidmaa, N. Enhtsotog, and M. Arvinzon

GIS SYSTEM: TNTmips (Microimages, Inc.)
PROJECTION: Transverse Mercator Projection
ZONE: 47
SPHEROID: Bessel1841
ORIGIN LATITUDE: N 00 00 00.00
CENTRAL MERIDIAN: E 99 00 00.00
FALSE EASTING: 500000m
FALSE NORTHING: 0.000000m