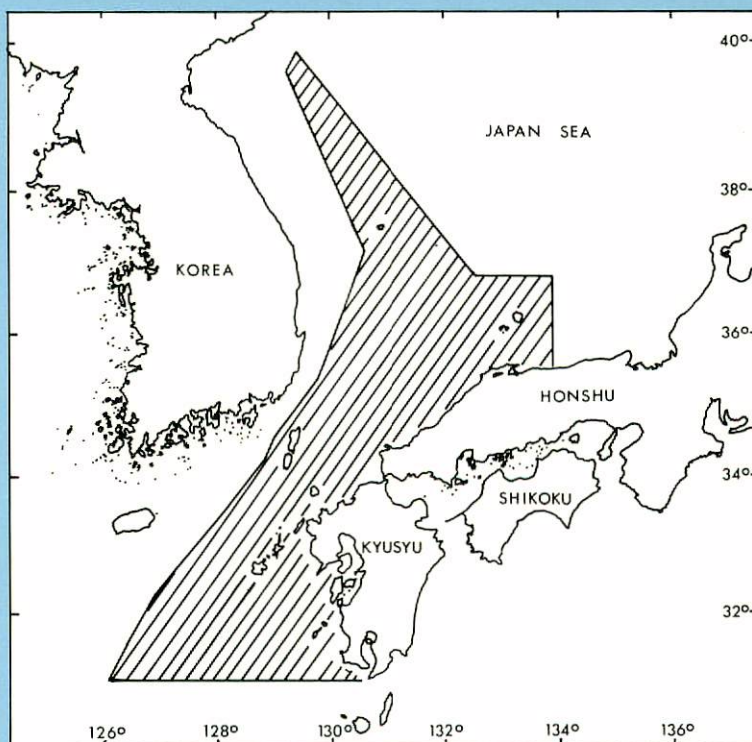


Cruise Report No. 10

GEOLOGICAL INVESTIGATIONS IN THE NORTHERN MARGIN OF THE OKINAWA TROUGH AND THE WESTERN MARGIN OF THE JAPAN SEA

April-May 1977 (GH77-2 Cruise)



Geological Survey of Japan

1978

**Geological Investigations in the
Northern Margin of the Okinawa Trough and the
Western Margin of the Japan Sea
April-May 1977 (GH 77-2 Cruise)**

Edited by Eiichi HONZA

Geological Survey of Japan

**Geological Survey of Japan
Shigeru SATO, Director**

**Hisamoto, Takatsu-ku
Kawasaki-shi,
Japan
1978**

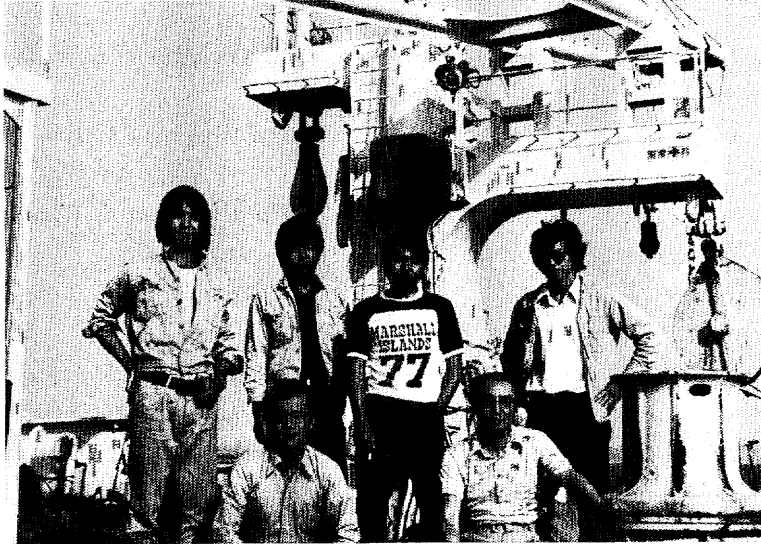
© 1978 Geological Survey of Japan

135 Hisamoto, Takatsu-ku, Kawasaki-shi, 213 Japan

Komiyama Printing Co., Ltd.
78 Tenjin-cho, Shinjuku-ku, Tokyo
Japan, 1978

GH 77-2

G. S. J. Scientific staff-GH 77-2 Cruise



Front row (L-R): *Eiichi Honza and Kaichi Ishibashi*

Back row (L-R): *Kensaku Tamaki, Makoto Yuasa, Fumitoshi Murakami and Masato Joshima*