

Bulgaria*

Direction des Mines, Ministère des Mines et des Richesses.
du Sous-sol, Sofia

Burma*

Burma Geological Department.
226 Dalhousi Street, P. O. Box 843, Rangoon

Brundi

Department de la Geologie et des Mines.
B. P. 745, Bujumbura

Cambodia

Service National des Mines.
Phnom Penh

Cameroun

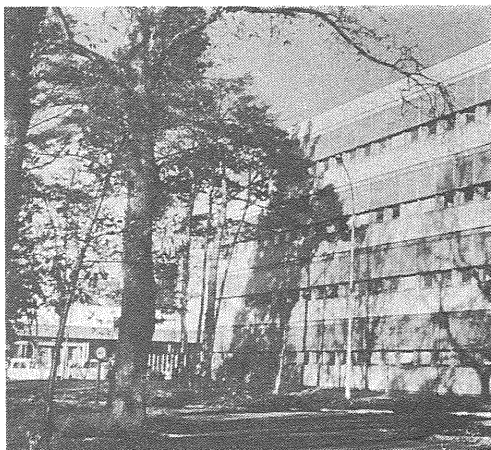
*Direction des Mines et de la Geologie.
B. P. 70, Yaounde

Canada

*Geological Survey of Canada,
Department of Energy, Mines and Resources.
601 Booth Street, Ottawa 1

Central Africa

Direction des Mines.
B. P. 26, Bangui



B.R.G.M. フランス地質調査所の実験部 (井上技官撮影)

Ceylon*

Geological Survey Department.
Sri Jinaratana Road 48, Colombo 2

Chad

Direction des Mines.
B. P. 431, Fort Lamy

Chile

*Instituto de Investigaciones Geologicas.
Casilla 10465, Augustinas 785, 5 piso, Santiago

China (People's)*

Chinese Ministry of Geology.
Peking

China (Republic)

*Mining Research and Service Organization,
Ministry of Economic Affairs.
261 Roosevelt Road, Section III, Taipei, Taiwan

Colombia

*Instituto de Investigaciones Geologico y Mineras.
Apartado Nacional 2504, Bogota

Congo (Brazaville)

*Direction des Mines et de la Geologie.
B. P. 12, Brazaville

Congo (Kinshasa)*

Service Geologique de la Republique
Democratique du Congo.
Lubumbashi et Bukava, Kinshasa

Costa Rica

*Direction de Geologia, Minas y Petroleo,
Ministerio de Industria y Comercio.
San Jose

Cuba*

Instituto Nacional de Investigaciones Cientificas.
Cerro 829, Havana

Cyprus

*Geological Survey Department, Ministry of
Commerce and Industry.

Nicosia

B. P. 175, Libreville

Czechoslovakia*

Central Geological Office, Ministry of Mining.
Lazraka 7, Praha

Germany (Democratic)

*Zentral Geologische Institut, Staatlich Geologische
Kommission der D.D.R.
Vertriebsstelle, 104, Berlin N 4

Dahomey

Service des Mines et de la Geologie.
Cotonou

Germany (Federal)

*Bundesanstalt für Bodenforschung.
3 Hannover-Buchholz, Alfred-Bentz-Haus,
Postfach 54

Denmark

*Geological Survey of Denmark.
Thoravej 31, DK-2400, København NV

Ghana

*Geological Survey, Ministry of Lands and Mineral
Resources.
P. O. Box M. 80, Accra

Dominica*

Departamento de Mineralogia, Secretary of
Industry and Commerce.
Santo Domingo

Greece

*Institute for Geology and Subsurface Research,
Ministry of Industry.
Hippocratous Street, Athena 134

Ecuador

*Servicio Nacional de Geologia y Minería.
Casilla 23-A, Quito

Guatemala

*Direction General de Minería e Hidrocarburos,
Ministerio de Economía.
10a, Calle 11-46, Zona 1, Guatemala

El Salvador

*Centro de Estudios e Investigaciones Geotecnicas.
Final Avenida Peralta, San Salvador

Guiana (French)

*Service de la Carte Geologique de la Guyane.
B. P. 207, Cayenne

Ethiopia

*Geological Survey, Ministry of Mines.
P. O. Box 486, Addis Ababa

Guinea

Direction des Mines et des Industries, Ministère
de Développement Economique.
Conakry

Fiji

*Geological Survey Department.
P. B., G. P. O., Suva

Finland

*Geological Survey of Finland, Ministry of
Industry and Commerce.
Otaniemi

Guyana (British)

*Geological Survey Department.
P. O. Box 789, Georgetown, Demera

France

*Bureau de Recherches Géologiques et Minières.
74 rue de la Fédération, Paris XV^e

Haiti

Geological Survey, Department of Agriculture.
Damiens Pres Port-au-Prince

Gabon

Bureau de Recherches Géologiques et Minières.

Honduras

Centro Cooperativo Técnico Industrial.

30 piso Edificio Cantero, Apartado Postal 703

Hungary

*Hungarian Geological Institute.
Budapest XIV, Nepstadion U. 14

Iceland

Department of Geology and Geography,
Museum of Natural History.
Reykjavik

India

*Geological Survey of India
27 Jawaharal Nehru Road, Calcutta 16

Indonesia

*Geological Survey of Indonesia,
Department of Mines.
Dji. Diponegoro Nr. 57, Bandung

Iran

*Geological Survey of Iran, Ministry of Industries
and Mines.
Teheran

Iraq

Geological Survey Department, Direction of Mines.
Baghdad

Ireland

*Geological Survey of Ireland.
14 Hume Street, Dublin 2

Israel

*Geological Survey of Israel.
30 Malkhe Israel Street, Jerusalem

Italy*

Servizio Geologico d'Italia, Ministero Industria e
Commercio.
Lagos S. Susanna 13, Rome

Ivory Coast*

Service Geologique.
B. P. 1368, Abidjan

Jamaica

*Geological Survey Department.
Hope Gardens, Kingston 6

Japan

Geological Survey of Japan.
135 Hisamoto-cho, Kawasaki-shi

Jordan*

Geology Division, Ministry of National Economy.
Amman

Korea

*Geological Survey of Korea, Ministry of Science
and Technology.
125 Namyoung-dong, Yongsan-ku, Seoul

Kenya

Mines and Geological Department,
Ministry of Natural Resources.
P. O. Box 30009, Nairobi

Laos

Service Central des Mines.
Vientiane

Lesotho

*Department of Mine.
P. O. Box 750, Maseru

Liberia

Bureau of Natural Resources and Surveys.
P. O. Box 145, Monrovia

Libya

*Geological Section, Ministry of Industry.
Tripoli

Madagascar

*Service Geologique,
Direction des Mines et de l'Energie.
B. P. 280, Tananarive

Malawi

*Geological Survey Department.
P. O. Box 27, Zomba

Malaysia

*Geological Survey Federal HQ.
Scrivenor Road, P. O. Box 1051, Ipoh

Mali

Ministere des Travaux et des Ressources
Energetique.
Bamako

Mauritania

Direction des Mines et de la Geologie.
Nouachott

Mexico

*Consejo de Recursos Naturales no Renovables.
Mexico 7, D. F.

Mongolia

Geological Research Department,
Academy of Science of the MPR.
Ulanbator

Morocco

*Direction des Mines et de la Geologie,
Ministere du Commerce.
Rabat-Chelhoh

Mozambique

*Department of Geology and Mining.
CP 217, Lourenco Marques

Nepal

*Nepal Geological Survey,
Ministry of Industry and Commerce.
Lainchaur, Kathmandu

Netherlands

*Netherlands Geological Survey.
Spaarne 17, Haariem

New Caledonia*

Service des Mines et de la Geologie.
R. T. No. 1, B. P. 465, Noumea

New Zealand

*New Zealand Geological Survey,

Department of Science and Industrial Research.
P. O. Box 30368, Lower Hutt

Nicaragua

*Servicio Geologico Nacional,
Ministerio de Economia.
Apartado 1347, Managua D. N.

Niger

Service des Mines et de la Geologie,
Ministere des Travaux Publiques.
Niamey

Nigeria

*Geological Survey Division,
Ministry of Mines and Power.
P. M. B. 2007, Kaduna

Norway

*Norwegian Geological Survey.
Leiv Erikssonsvei 39, Trondheim

Pakistan

*Geological Survey of Pakistan.
P. O. Box 15, Baluchistan, Quetta

Paraguay

*Direction de Recursos Minerales,
Ministerio de Obras Publicas y Comunicaciones
Asuncion

Panama

Departamento de Recursos Minerales,
Ministerio de Agricultura, Comercio e Industrias.
Apartado Postal 1631, Panama

Peru

*Instituto Nacional de Investigacion y
Fomento Mineros.
Casilla Correo 300, Apartado 889, Lima

Philippines

*Bureau of Mines, Department of Agriculture
and Natural Resources.
P. O. Box 1595, Manila

Poland

*Geological Survey of Poland.
Rakowiecka Street 4, Warszawa

Portugal

*Servicos Geologicos de Portugal.
Rua de Academia das Ciencias 19-2, Lisbon 2

Puerto Rico

Mineralogy and Geology Section.
P. O. Box 38, Roosvelt, Puerto Rico 00929

Reunion

Service des Travaux Publica.
St. Denis

Rhodesia

*Geological Survey Department, Ministry of Mines.
P. O. Box 8039, Couseway, Salisbury

Rumania

*Geological Institute of Romania.
Sos. Kiseleff 55, Bucuresti 63

Rwanda

*Service Geologique de la Republic Rwandaise.
Ruhengeri

Saudi Arabia

*Ministry of Petroleum and Mineral Resources.
Jeddah

Senegal

Service des Mines et de la Geologie.
B. P. 1238, Dakar

Sierra Leone

*Geological Survey Department, Minstry of Lands,
Mines and Labour.
New England, Freetown

Somali

*Geological Survey Department.
P. O. Box 41, Haragesia

Somaliland (French)

Service des Travaux Publices de la
Cote des Somalis.
Djibouti

South Africa

*Geological Survey.
P. B. 112, Pretoria

South West Africa

Geological Survey.
P. O. Box 2168, Windhock

Spain

*Instituto Geologico y Minero de Espana.
Rios Rosas 23, Madrid

Sudan

*Geological Surevey Department,
Ministry of Mineral Resources.
P. O. Box 410, Kbartoum

Surinam

*Geology and Mining Service
2-6 Kleine Waterstreet, Paramaribo

Swaziland

*Geological Survey and Mines Department.
P. O. Box 9, Mbabane

Sweden

*Geological Survey of Sweden.
Stockholm 50

Switzerland

*Schweizerische Geologische Kommission.
Basel, Bernoullianum

Syria*

Directorat of Geological Research
and Mineral Prospection,
Ministry of Industry.
Damascus

Tanzania

*Geological Survey, Ministry of Commerce

and Industry.
P. O. Box 903, Dodoma

Thailand

*Geological Survey Division,
Department of Mineral Resources.
Rama 6th Road, Bangkok

Togo

*Direction des Mines et de la Geologie.
B. P. 356, Lome

Trinidad and Tobago

Ministry of Petroleum and Mines.
P. O. Box 96, Port of Spain

Tunisia

*Service Geologique de Tunisie.
95 Av. Mohamad V, Tunis

Turkey

*Mineral Research and Exploration
Institute of Turkey.
P. K. 116, Ankara

U. A. R.

*Geological Survey of Egypt,
Mineral Resources Department.
Cairo

Uganda

*Geological Survey of Uganda.
P. O. Box 9, Entebbe

United Kingdom

*Institute of Geological Science.
Exhibition Road, South Kensington,
London S, W, 7

Upper Volta

Direction de la Geologie et des Mines.
Quagadougou

Uruguay

*Instituto Geologico del Uruguay.
Calle J, Herrera y Obes, 1239, Montevideo



イギリス地質科学研究所の地質博物館（井上技官撮影）

U. S. A.

*United States Geological Survey
Washington 25, D. C. 20242

U. S. S. R.*

Ministry of Geology.
Moscow

Venezuela

*Direction de Geologia, Ministerio de Minas e
Hidrocarburos.
Centro Simon Boliver,
Torre Norte, piso 19, Caracas

Vietnam (Republic)

*Service des Geologique, Direction des Mines.
31 rue Han-Chuyen, Saigon

Yemen

Office of Mineral Resources,
Ministry of Public Work.
Sara's

***Yugoslavia**

Institut de Geologia de l'Academie,
Serbe des Sciences.
Beograde

Zambia

*Geological Survey Department,
Ministry of Labour and Mines.
P. O. Box R. W. 135, Ridgway, Lusaka