

数値地質図 G-5 「東・東南アジアの都市域地球科学データ」

Urban Geoscientific Data of East and Southeast Asia
- GIS data sets of 11 cities -

発行年：2001

この CD-ROM は、東・東南アジア沿岸沿海地球科学計画調整委員会(CCOP)のプロジェクト「東・東南アジアの地球科学図デジタル編纂，第・期」(1998-2000fy)の最終成果である。本プロジェクトでは、東・東南アジアの11都市(名古屋，広州-仏山，東營，蔚山，クアラルンプール，ハノイ，プノンペン，ポートモレスビー，セブ，プーケット，バンドン)を選定し、地質図，地形図，水資源図，活断層図，土地利用図，ライフライン図などの地球科学情報を数値化・データベース化し，地理情報システムで表示できるように編集した。

DCGM III 作業部会/東・東南アジア沿岸沿海地球科学計画調整委員会(CCOP)/地質調査所(GSJ)

Instruction for the CD-ROM

This CD-ROM set provides files of geoscientific data of large urban cities of East and Southeast Asia. Included are data in RVC format for the viewer program "TNTAtlas ver 6.2", and E00 format for data exchange for use in other GIS softwares. Please refer to the file, demo.pdf for instruction in the installation of the TNTAtlas and its usage in exploring the dataset contained in the CD-ROM Disc 1. Metadata and other important document are enclosed in "Document" Folder in the CD-ROM Disc 1.

Composition of the CD-ROMs

CD-ROM Disc 1: Dataset of RVC format: and Viewer software, TNTAtlas ver 6.2

CD-ROM Disc 2: Dataset of E00 format: You need your own GIS software.

Installation of DCGM III Atlas

1. Insert CD-ROM (Disc 1). The installation program automatically runs.

(The CD-ROM Autorun utility may not run depending on user's setting. In this case, go to Autorun Folder and click, Autorun.exe)

2. Click the Install button, to install TNTAtlas, and follow the instructional windows to complete installation.
3. Point the mouse to TNTAtlas icon and drag to your desktop.

Viewing the DCGM III Atlas,

1. Double-click the TNTAtlas icon. TNTAtlas will start.
2. Click "File" in the menu bar, and select "Open".
3. Double-click URBANGIS.atl, to start DCGM III Atlas.

(If TNT Atlas is already installed, Start TNT Atlas and open URBANGIS.atl.)

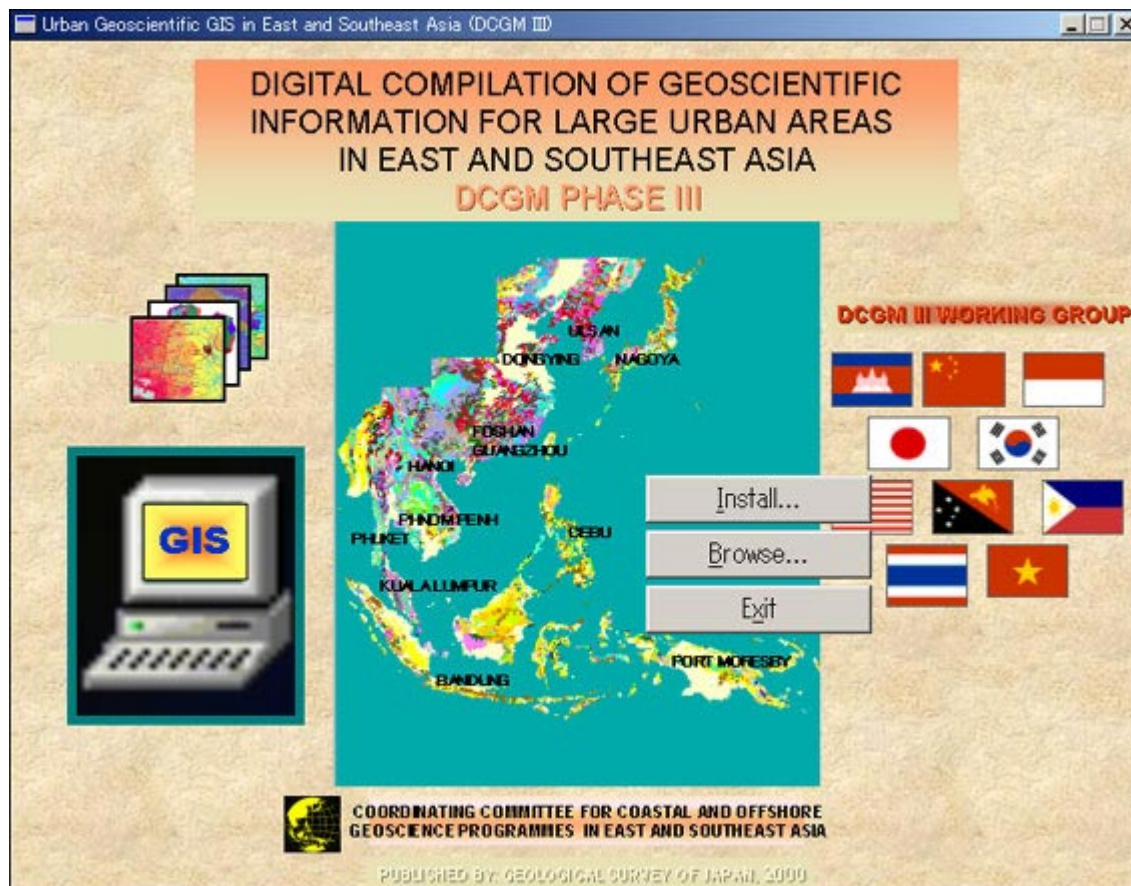
4. Click the target city, to get into the city's Harcopy Map Layouts.
5. Click the Map Layout you want to view. You can explore the Map layers and its Databases and Metadata at the Layer Manager window.
 - to view the metadata of individual map layer, click on the Tools icon and click Metadata
 - to view the attribute databases of individual map layer, click on the show details icon and choose show tables icon for polygon, line, or point database.
6. For showing DataTips, click on the Options menu, choose DataTips, and highlight All Layers
7. For previous page, click "Previous level" in the navigation control panel.
8. For main Homeindex, click "Home Level" in the navigation control panel.
9. To leave TNTatlas, click "File" in the upper bar and select "Exit".

Recommended System requirements

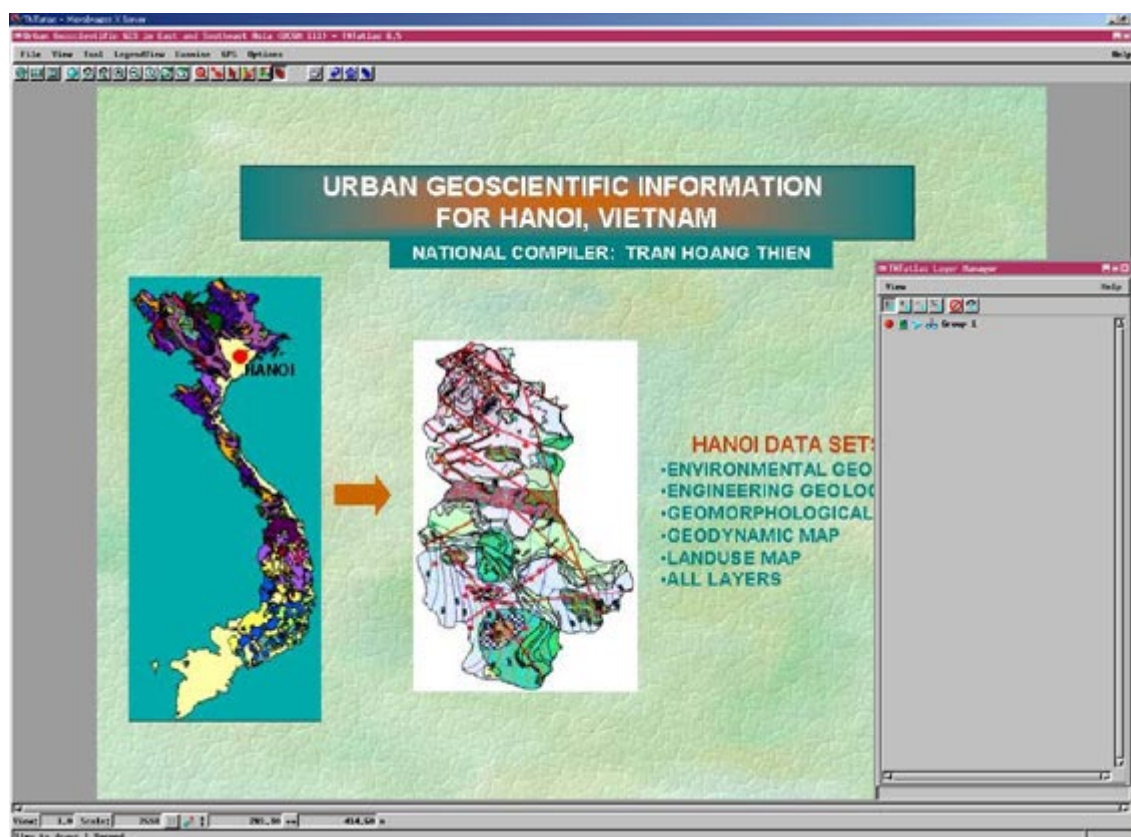
Computer with Pentium / 133 MHz or higher with Windows 95/ 98/2000 or Window NT3.5/4.0, and high resolution Display.

CD-ROM 収納データ表示例

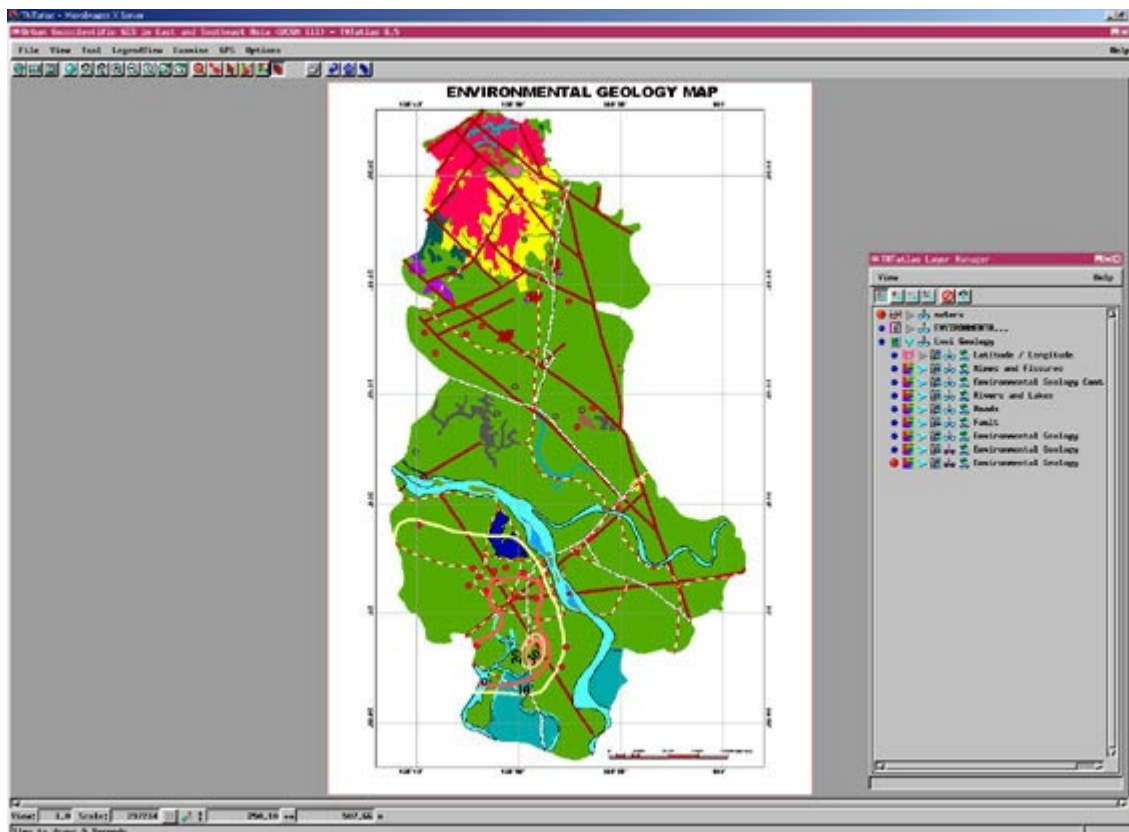
[DCGM III アトラス起動画面]



[TNTAtlas での表示例]



[TNTAtlas での表示例]



[TNTAtlas での表示例]

