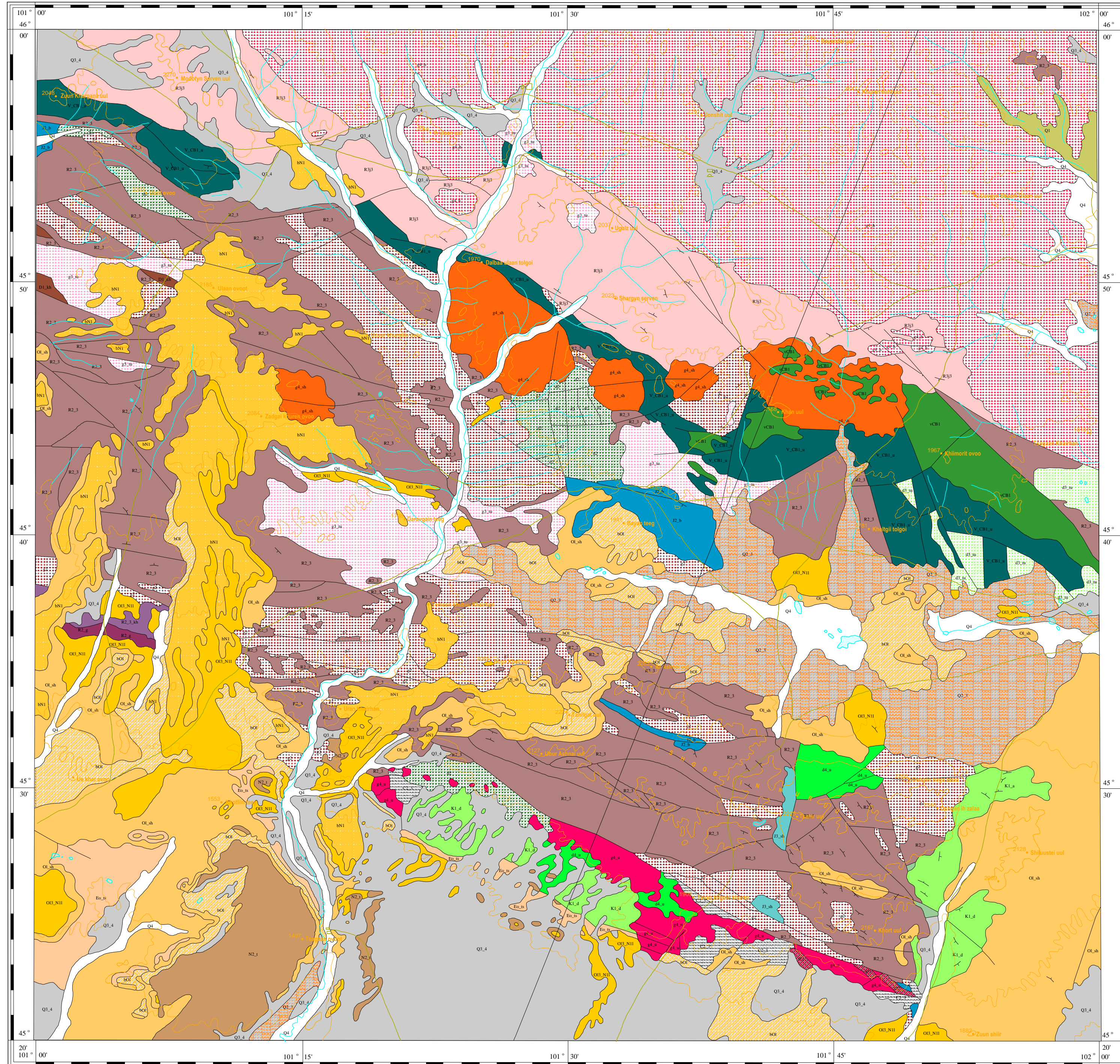


GEOLOGICAL MAP

L-47-XXIV

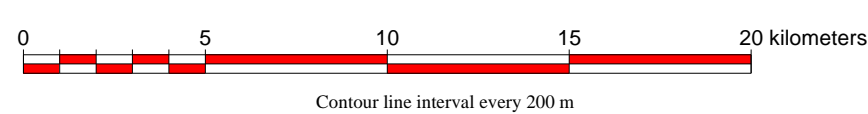
MONGOLIA
Mineral Resources Authority of Mongolia
Office of Geology
Bureau of Geological Investigation C 1998

JAPAN
Japan International Cooperation Agency
Geological Survey of Japan

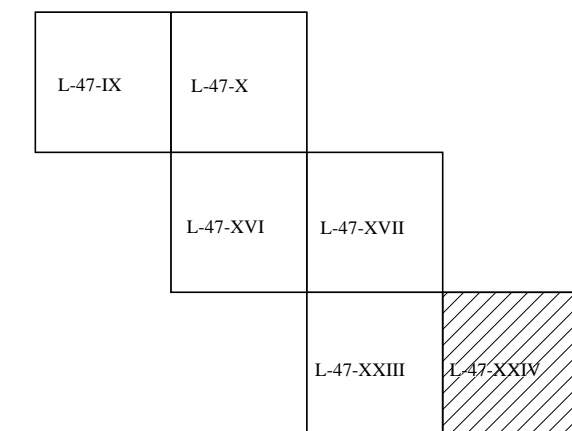
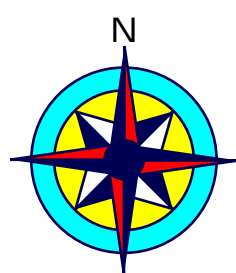


1:200 000

1 cm equivalent to 2 km



Contour line interval every 200 m



LEGEND

Q4: a-alluvium, l-lacustrine	O3b: Tsagaandel Formation	Unconformity
Q3-4: ap-alluvium-proluvium, dp-deluvium-proluvium	O3u: Ulaansair Formation	Main normal fault
Q2-3: dp-deluvium-proluvium	g3u: Ugalz Granite (granites)	Major normal fault
Q2: ap-alluvium-proluvium, la-lacustrine-alluvium	g3tu: Tsahir-uu Complex (granites)	Thrust fault (allochthon below)
Q: Undivided	d3tu: Tsahir-uu Complex (diorites)	Thrust fault (allochthon above)
bN1: Flood Basalt	CB2gb: Zag Group: Gurvanbulag Formation	Locality of radiometric age (Ma)
Ol sh: Shand-gol Formation	bCB1: Bayanhongor Ophiolite Complex (basaltic pillow lavas)	Locality of microfossils (reference No.)
Kl1d: Dovont Formation	mbCB1: Bayanhongor Ophiolite Complex (sheeted dykes)	Locality of fossil fauna (reference No.)
g4h: Khangai Complex (granites)	vV: Bayanhongor Ophiolite Complex (gabbro)	Locality of fossil flora (reference No.)
d4h: Khangai Complex (diorites)	sV: Bayanhongor Ophiolite Complex (metamorphosed ultrabasic rocks)	
g4u: Ulaagchin Complex (granites)	CB1u2: Jirem-nuruu Group: Ulziit-gol Formation (Upper M.)	
g4sh: Shar-us-gol Granite (granites)	Vu1: Jirem-nuruu Group: Ulziit-gol Formation (Lower M.)	
g4t: Tarvagatai Complex (granites)	R3j3: Jirem-nuruu Group: Jargalant-nuruu Formation (Upper M.)	
g4k: Tsogt-khairhan Complex (granites)	g2: Riphean Complex (granites)	
g4k: Tsogt-khairhan Complex (diorites)	R3b: Burd-gol Group: Bumbat Formation	
lP2: Subvolcanics	R2-3kh: Burd-gol Group: Khubbulag Formation	
P1-2kh: Khuremaral Formation	R2g: Burd-gol Group: Gunhudag Formation	
C1-2bu: Buutsagaan Formation	g1: Proterozoic Granite (granites)	
C1o: Orhi-khundii Formation	PR1b: Bombogor Metamorphic Complex	
S1-2s: Saran-uu Formation	AR2b: Baidrag Metamorphic Complex	

Published by:
Geoinformation Section of Bureau of Geological Investigation

Edited by:
O. Tomurtogoo, T. Nakajima, Y. Takahashi, Ch. Minjin,
N. Ichinorov, and S. Oyungerel

Geological Survey and Map Compilation by:
O. Tomurtogoo, Y. Takahashi, T. Nakajima, N. Ichinorov,
S. Oyungerel, Ch. Minjin, Lh. Bayarmandal, Y. Teraoka,
Ch. Kurimoto, F. Tungalag, B. Delgertsogt, and K. Naito

Computer Processing by:
Y. Watanabe, G. Dijidmaa, N. Enhtsogt, and M. Arvinzon

GIS SYSTEM: TNTmips (Microimages, Inc.)
PROJECTION: Transverse Mercator Projection
ZONE: 47
SPHEROID: Bessel 1841
ORIGIN LATITUDE: N 00 00 00.00
CENTRAL MERIDIAN: E 99 00 00.00
FALSE EASTING: 500000m
FALSE NORTHING: 0.000000m